

j

International 5.5 Metre Class World Championship 2024

2nd – 6th September 2024

Organizing Authority: Yacht Club de l'Odet (YCO) Bénodet France

In conjunction with the International 5.5m Class Association.

SAILING INSTRUCTIONS

The notation '[NP]' in a rule of the sailing instructions (SIs) means that a boat may not protest another boat for breaking that rule. This changes RRS 60.1(a).
The notation '[DP]' in a rule means that the penalty for a breach of that rule, at the discretion of the International Jury may be less than disqualification.

1 RULES

- 1.1 The regatta will be governed by the rules as defined in The Racing Rules of Sailing 2021- 2024.
- 1.2 RRS Appendix T Arbitration will apply.
- 1.3 If there is a conflict between languages the English text will take precedence.
- 1.4 As part of its environmental initiative, YCO will not issue paper copies.
- 1.5 In the event of a conflict between the Notice of Race and the Sailing Instructions, the Sailing Instructions and the subsequent communications of the race committee shall prevail (changes RRS 63.7).

2 CHANGES TO SAILING INSTRUCTIONS

- 2.1 Any change to the sailing instructions will be posted before 09.00 on the day it will take effect, except that any change to the schedule of races will be posted by 20.00 on the day before it will take effect.

3 COMMUNICATION WITH COMPETITORS AND VENUE

- 3.1 The online Official Notice Board (ONB) is located at :
<https://www.yco-voile.fr/documents-onb/>
- 3.2 The race office will be located in the Yacht Club de l' Odet
- 3.3 The QR code (Appendix C) is a direct link to the Event WhatsApp Group.
- 3.4 Messages will be sent via WhatsApp. Failure to send these messages or to make broadcasts will not be grounds for redress. This changes RRS 62.1
- 3.5 All boats shall carry a VHF radio capable of communicating on channels VHF 6, 8 16, 72 & 77. The radio shall be on at all time when on the water. The race committee may make courtesy broadcasts to competitors on VHF 72.
- 3.6 From the first warning signal until the end of the last race of the day, except in an emergency, a boat shall not make voice or data transmissions and shall not receive voice or data communication that is not available to all boats.

4 CODE OF CONDUCT [DP]

- 4.1 Competitors and support persons shall comply with reasonable requests from Regata officials.
- 4.2 Competitors and support persons shall handle any equipment provided by the organizing authority with care, seamanship, in accordance with any instructions for its use and without interfering with its functionality

5 SIGNALS MADE ASHORE

- 5.1 Signals made ashore will be displayed on the main flag pole, located in front of the Yacht Club de l' Odet
- 5.2 [NP] A boat shall not leave the shore until flag D is displayed ashore. The warning signal will be made not less than 60 minutes after flag D is displayed or not before the schedule time, whichever is later.

6 SCHEDULE OF EVENTS

6.1 Registration :

Saturday August 31 st	15.00 – 18.00	Race Office - YC de l'Odet
Sunday September 1 st	10.00 – 18.00	Race Office - YC de l'Odet

6.2 Equipment inspection and event measurement:

Saturday August 31 st	9.00 – 18.00	Docks and YC de l'Odet
Sunday September 1 st	9.00 – 18.00	Docks and YC de l'Odet

6.3 Skippers Briefing :

Sunday September 1 st	18.30	In front of the YC de l'Odet
----------------------------------	-------	------------------------------

6.4 Racing days :

	First Warning signal	Scheduled Races	Tides ↑ Rising ↓ Outgoing	Tidal Range
Monday September 2 nd	12.00	2	↓ 5h23 → 11h25 ↑ 11h25 → 17h33	77 80
Tuesday September 3 rd	12.00	2	↓ 5h53 → 11h59 ↑ 11h59 → 18h02	83 85
Wednesday September 4 th	12.00	2	↓ 6h21 → 12h30 ↑ 12h30 - 18h30	86 86
Thursday September 5 th	12.00	2	↓ 6h48 → 12h59 ↑ 12h59 → 18h58	86 85
Friday September 6 th	12.00	2	↓ 7h15 → 13h28 ↑ 13h28 → 19h25	83 81

- 6.5 No warning signal will be displayed after 15.00 on Friday September the 6th unless it follows a signal of general recall or postponement of a race whose first warning signal had been displayed before 15.00
- 6.6 Average Sunset Time for the event : 20.40

7 CLASS FLAGS

- 7.1 The class flag will be the 5.5 Class flag

8 RACING AREA

- 8.1 Addendum A shows the approximate location of racing area. Sailing up or down the Odet River from the harbour is 1 ½ mile. (+/- Tides).
- 8.2 The course will be located approximately 4nm from the docks.

9 THE COURSES

- 9.1 The diagram in Addendum B shows the course, the order in which marks are to be passed and the side on which each mark is to be left or rounded.
- 9.2 No later than the warning signal, the race committee starting vessel may display, the course to be raced, and approximate compass bearing to the first mark.
- 9.3 An offset mark (2) shall be left or rounded to port.
- 9.4 If a gate mark is missing, remaining mark shall be left to port.
- 9.5 Courses will not be shortened. This change RRS 32.1

10 MARKS

- 10.1 Course marks will be : Yellow (Cylindrical)
- 10.2 Starting mark will be : Orange
- 10.3 Finishing mark will be : Blue
- 10.4 Change of course mark will be : Red

11 THE START

- 11.1 Races will be started in accordance with RRS 26.
- 11.2 The starting line will be between a staff displaying an orange flag on the starting vessel on starboard-end and the course side of the starting mark on port-end.
- 11.3 The starting vessel and the service vessel may hold their position with the use of their engines. Failing to hold their position or using the engine to hold it will not be grounds for a request for redress. This changes RRS 60.1(b).
- 11.4 If any part of a boat's hull is on the course side of the starting line at her starting signal and she is identified, the race committee may attempt to broadcast her bow number on VHF radio channel 72. This changes RRS 60.1(b). [NP]
- 11.5 A boat starting later than 4 minutes after her starting signal will be scored Did Not Start without a hearing. This changes RRS A5.1 and A5.2
- 11.6 Boats shall display bow number stickers as provided and applied by the Organizing Authority. Bow number stickers shall be located on both sides of the boat, within the 20% foremost part of the hull.

12 CHANGE OF THE NEXT LEG OF THE COURSE

- 12.1 To change the next leg of the course, the race committee will lay a new mark (or move the finishing line) and remove the original mark as soon as practicable. When in a subsequent change a new mark is replaced, it will be replaced by an original mark.
- 12.2 If mark 1 is replaced, mark 2 is not a course mark anymore.
- 12.3 Except at a gate, boats shall pass between the race committee vessel signaling the change of the next leg and the nearby mark. This change RRS 33.

13 THE FINISH

- 13.1 The finishing line will be between a staff displaying a blue flag on the committee vessel on port end, and the course side of the finishing mark on starboard. (See Addendum B).

14 PENALTY SYSTEM

- 14.1 RRS 44.1 is changed so that the Two-Turns Penalty is replaced by the One-Turn Penalty.
- 14.2 RRS Appendix P applies with the Two-Turns penalty replaced by the One-Turn Penalty .
- 14.3 Penalties for a breach of a rule other than a RRS Part 2 rule or rule 31 will be at the discretion of the international jury and may be less than a disqualification.
- 14.4 When a member of the international jury observes a breach of a rule of Part 2 or rule 31, they will display a red Flag with a sound signal to indicate that a boat has broken a rule and is expected to take a penalty. While the primary responsibility to protest the incident stays with the boats, the jury may be called as witness if the incident is protested and may protest when they consider the incident has involved reckless sailing or there has been a breach of sportsmanship.

15 TIME LIMITS

- 15.1 Times (minuts)

Target Time [NP]	Race Time Limit	Mark 1 Time Limit	Finishing Window
70/90	120	45	45

- 15.2 If no boat has passed the first mark within the Mark 1 Time Limit, the race will be abandoned.
- 15.3 Boats failing to finish within the finishing window, and not subsequently retiring, penalized, or given redress, will be scored Time Limit Expired (TLE) without a hearing. A boat scored TLE shall be scored points for the finishing place one more than the points scored by the last boat that finished within the finishing window. This changes RRS 35, A5.1, A5.2 and A10.

16 HEARING REQUESTS

- 16.1 Hearing request forms are available at the race office.
- 16.2 Protests and requests for redress forms shall be received, within the protest time limit, at the race office .
- 16.3 The protest time limit is 90 minutes after the last boat has finished the last race of the day or the race committee signals no more racing today, whichever is later.
- 16.4 Schedule of hearings will be posted on the ONB within 30 minutes of the protest time limit. to inform competitors of hearings in which they are parties or named as witnesses. Hearings will be held in the protest room, located in the SNSM room , just next to the YC de l'Odet.
- 16.5 The right of appeal from the International Jury decision is denied as provided in rule 70.5.
- 16.5 On the last schedule day of racing, a request for redress based on an International Jury decision shall be delivered no later than 30 minutes after the decision was posted . This change RRS 62.2(a)
- 16.6 A list of boats that have been penalized for breaking RRS 42 under Appendix P will be posted.

17 SCORING

- 17.1 Ten (10) races are scheduled.
- 17.2 Four (4) races must be completed to constitute a World Championship.
- 17.3 When fewer than six (6) races have been completed, a boat's series score will be the total of her race scores.
- 17.4 When six (6) or more races have been completed, a boat's series score will be the total of her race scores excluding her worst score.

18 SAFETY REGULATIONS [DP]

- 18.1 All boats shall sail past the race committee starting vessel on starboard tack prior to warning signal of the first race each day.
- 18.2 A boat that retires from a race shall notify the race committee at the first reasonable opportunity

19 REPLACEMENT OF CREW OR EQUIPMENT [DP]

- 19.1 Substitution of competitors is not allowed without prior written approval of the race committee.
- 19.2 Substitution of damaged or lost equipment is not allowed unless authorized in writing by the race committee. Requests for substitution shall be made to the race committee at the first reasonable opportunity, which may be after the race.

20 EQUIPMENT AND MEASUREMENT CHECKS [DP]

- 20.1 A boat or equipment may be inspected at any time for compliance with the class rules, the notice of race and sailing instructions.
- 20.2 When instructed by a race official on the water, a boat shall proceed to designated area for inspection.
- 20.3 Boat's weighing may be asked by the Technical Committee at anytime

21 OFFICIAL VESSELS [NP]

- 21.1 The race committee vessel will be identified by the YCO flag.
- 21.2 Service vessels : YCO flag.
- 21.3 Technical Committee Vessels : YCO flag
- 21.4 Jury vessels : Yellow JURY flag
- 21.5 The safety vessel : YCO flag
- 21.6 Media, film crews and VIP's are under the jurisdiction of the race committee and of the RRS : YCO flag

22 SUPPORT TEAMS VESSELS

- 22.1 Support vessels shall register with the organizing authority before the start of the first race and shall display the flag supplied.
- 22.2 Support vessels shall not interfere with contact or service any boat racing and shall stay clear of areas where boats are racing from the preparatory signal until their boat/s have finished the race or the race committee signals that the race is postponed or abandoned. Requests or instructions given to support vessels by the race committee, technical committee or the jury shall be followed.

23 TRASH DISPOSAL

- 23.1 Boats shall not intentionally put trash in the water. Trash may be placed aboard official or support team vessels

24 HAUL-OUT RESTRICTIONS [NP] [DP]

- 24.1 All boats shall be afloat before 20.00 hours on the day prior to the first scheduled race and shall not be hauled out during the regatta except with and according to the terms of prior written permission of the race committee.

25 DIVING [NP] [DP]

- 25.1 All competitors are required by the Harbour Safety Regulations to keep the marina docks in order and provide appropriate space for others moored on the same dock. Sails and dock boxes shall be kept in the immediate vicinity of the assigned mooring place. The Harbourmaster and the Coast Guard will monitor the docks to ensure compliance
- 25.2 When arriving or leaving the assigned mooring place, if assistance is needed, boats can contact the Marina ribs available on VHF 09 or the YCO ribs available on VHF channel 72

26 PRIZES

26.1 Prizes and gold, silver and bronze medals will be given to the three first boats.

26.2 Trophies will be awarded in accordance with the World Championship Rules.

27 RISK STATEMENT

RRS 3 states: 'The responsibility for a boat's decision to participate in a race or to continue to race is hers alone.' By participating in this event each competitor agrees and acknowledges that sailing is a potentially dangerous activity with inherent risks. These risks include strong winds and rough seas, sudden changes in weather, failure of equipment, boat handling errors, poor seamanship by other boats, loss of balance on an unstable platform and fatigue resulting in increased risk of injury. Inherent in the sport of sailing is the risk of permanent, catastrophic injury or death by drowning, trauma, hypothermia or other causes.

28 INSURANCE

28.1 Each participating boat shall be insured with valid third party liability insurance with a minimum cover of 2.000.000€ per event or the equivalent, taking into account the value of the boats racing and the measure of damages likely to arise in the event of an accident.

28.2 The OA is not responsible for verifying the status or validity of the insurance certificate.

28.3 General conditions as stated in detail on the entry form .

29 FURTHER INFORMATIONS AND CONTACTS

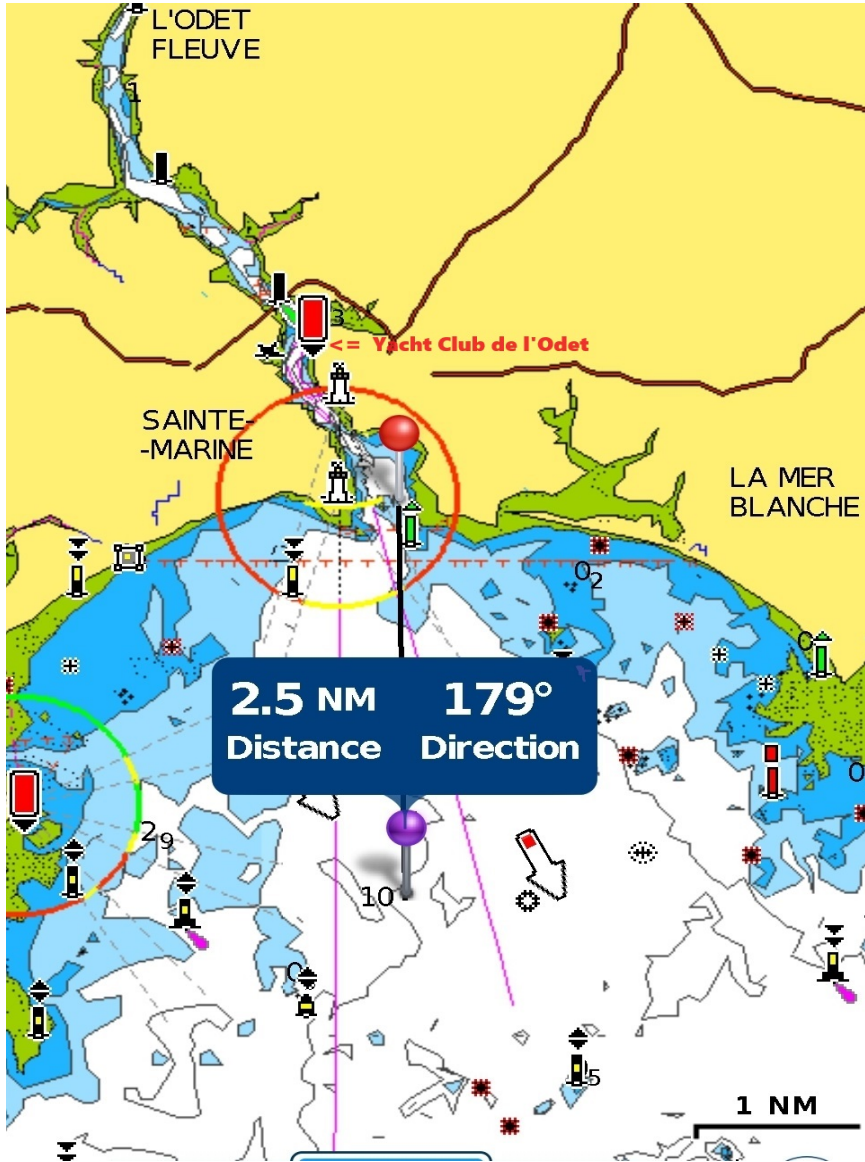
YC de l'Odet : Office TEL +33 2.98.57.26.09

Race Officers

Chairman of the Jury	COSKUNER GENÇ Pinar
Jury	SHORT Mike
Jury	CLARK James Bacon
Jury	BASTARD Paul
Jury	ALLAIRE Patrick
Principal Race Officer	DE TURCKHEIM Olivier
Race Officer	QUIDEAU Patrick
Race Officer	LE MER Michel
Technical Officer	PERRIN Guy Roland
Result Officer	MUTRICY Christine
O.A. Race Contact	MUTRICY Daniel

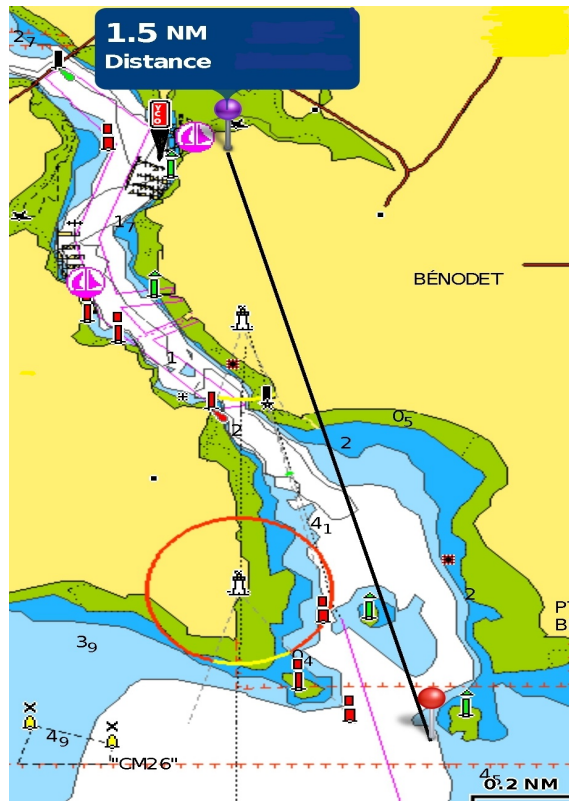
ADDENDUM A : RACE AREA

(Navionics's charts ©)



ADDENDUM A : RACE AREA

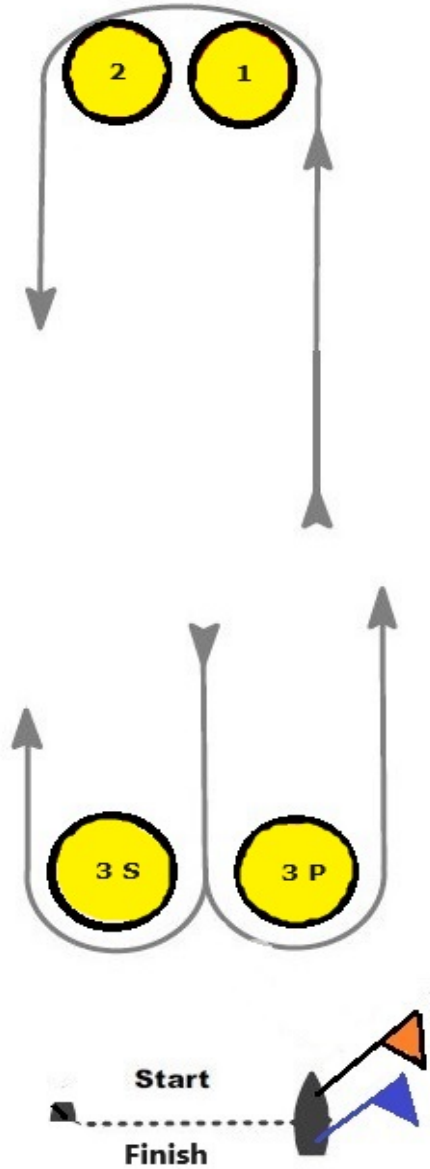




ADDENDUM B : COURSES

COURSE 1

Start, 1P, 2P, 3S-3P, 1P, 2P, Finish



ADDENDUM C :

QR CODE WhatsApp WORLD 5.5



5.5 World Championship 2024 Bénédict

Groupe WhatsApp



Scannez ce code QR avec la
caméra de WhatsApp pour
rejoindre ce groupe.